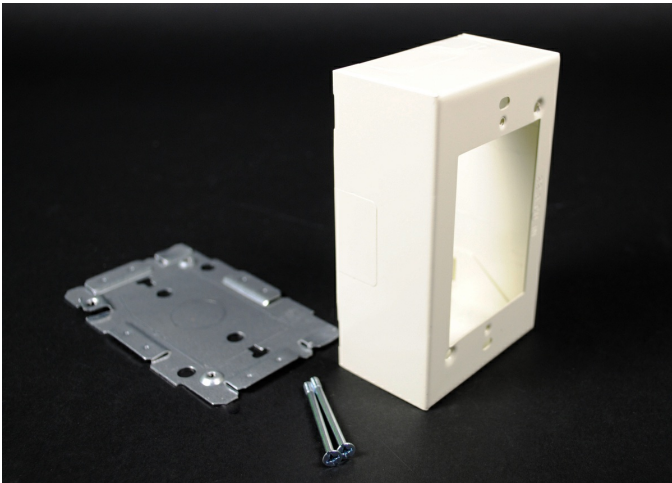




Wiremold  
Wiremold 2000 Series Single-Gang Device Box Fitting, Ivory  
Part No. V2048



The Wiremold 2000 Series raceway offers a selection of steel, aluminum, and nonmetallic raceways that provide a versatile solution for many applications. Plugmold sections offer single or alternating circuits, in standard or isolated ground receptacles. The ScuffCoat finish is scratch resistant and protects against nicks and chips while preventing color from fading.

## Features & Benefits

This product meets the material restrictions of RoHS

## Specifications

### General Info

Product Line	Wiremold	Replaced by Part Number	CV2048
Color	Ivory	UPC Number	786776037449
Country Of Origin	United States	Number of Receptacles	0
Application Sector	Commercial	Standard	cULus Listed Surface Metal Raceway: File E41751: Guide RJPR
Type	Plugmold		

### Dimensions

Product Width US	4.5 in	Product Weight US	0.52 lb
Product Volume US	25.38 cu in	Product Depth US	1.88 in
Product Height US	3.0 in		

## Buy American Act Compliance

---

NAFTA	Yes
-------	-----

---

### Additional Information

---

RoHS Conformant	Yes	Product Environmental Profile	Yes
-----------------	-----	-------------------------------	-----

---

### Technical Information

---

Enclosure Type	Steel	Voltage	300.0 V
----------------	-------	---------	---------

---

---

Environmental Conditions	Dry interior locations
--------------------------	------------------------

---